

KA NUI! ENOUGH!

OIL AND GAS

Sidewinder Well site and Production Station (TAG Oil) near Inglewood



Todd Energy Tikorangi



Photo Fiona Clark

Greymouth Petroleum Limited Moturoa

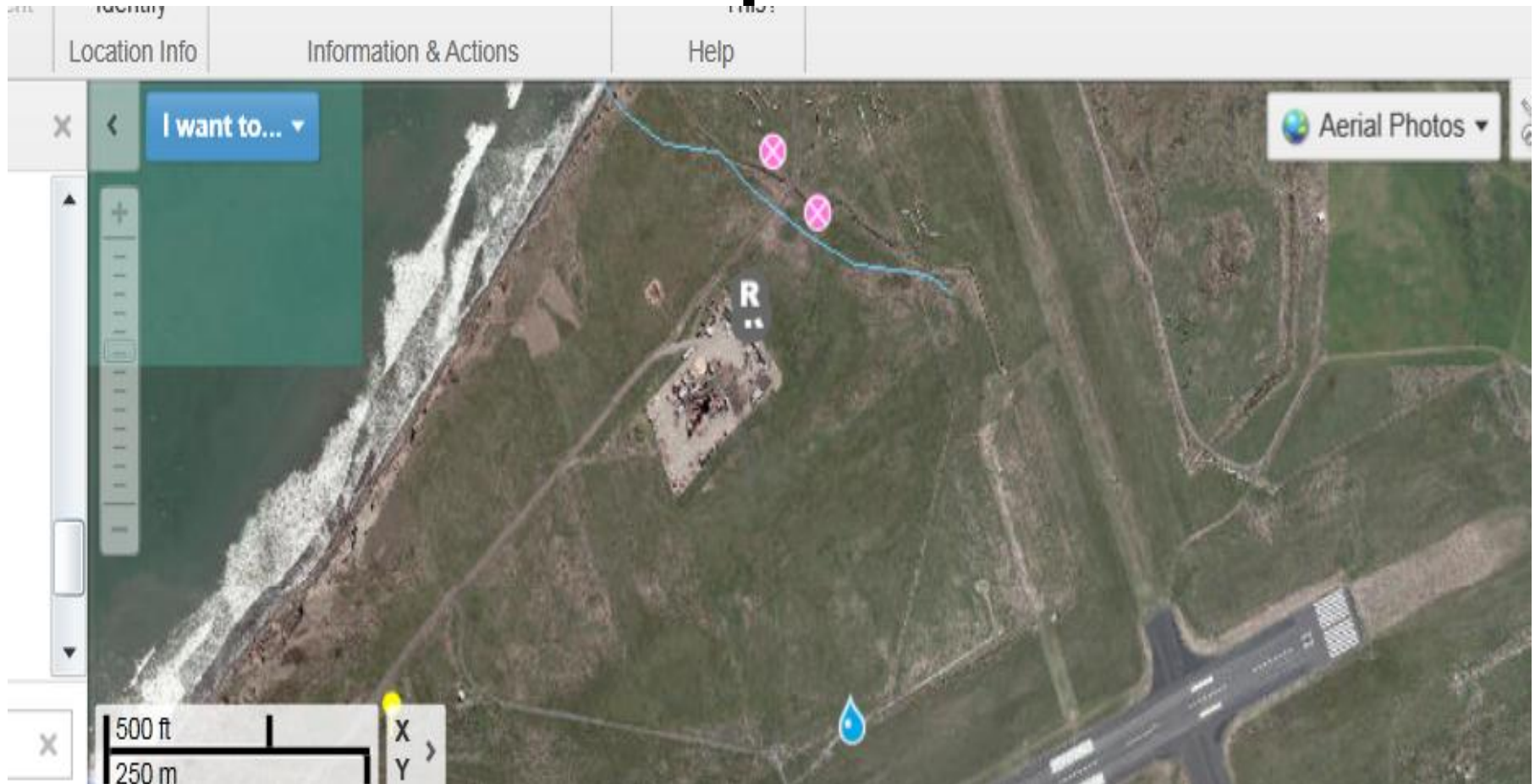


Photo Sarah Roberts



Photo: Sarah Roberts

Todd Energy and Greymouth Petroleum Limited, New Plymouth Airport



TAG Oil Cheal, Ngaere



Photo Sarah Roberts

Shell Todd Oil Services, Kapuni



Photo Sarah Roberts

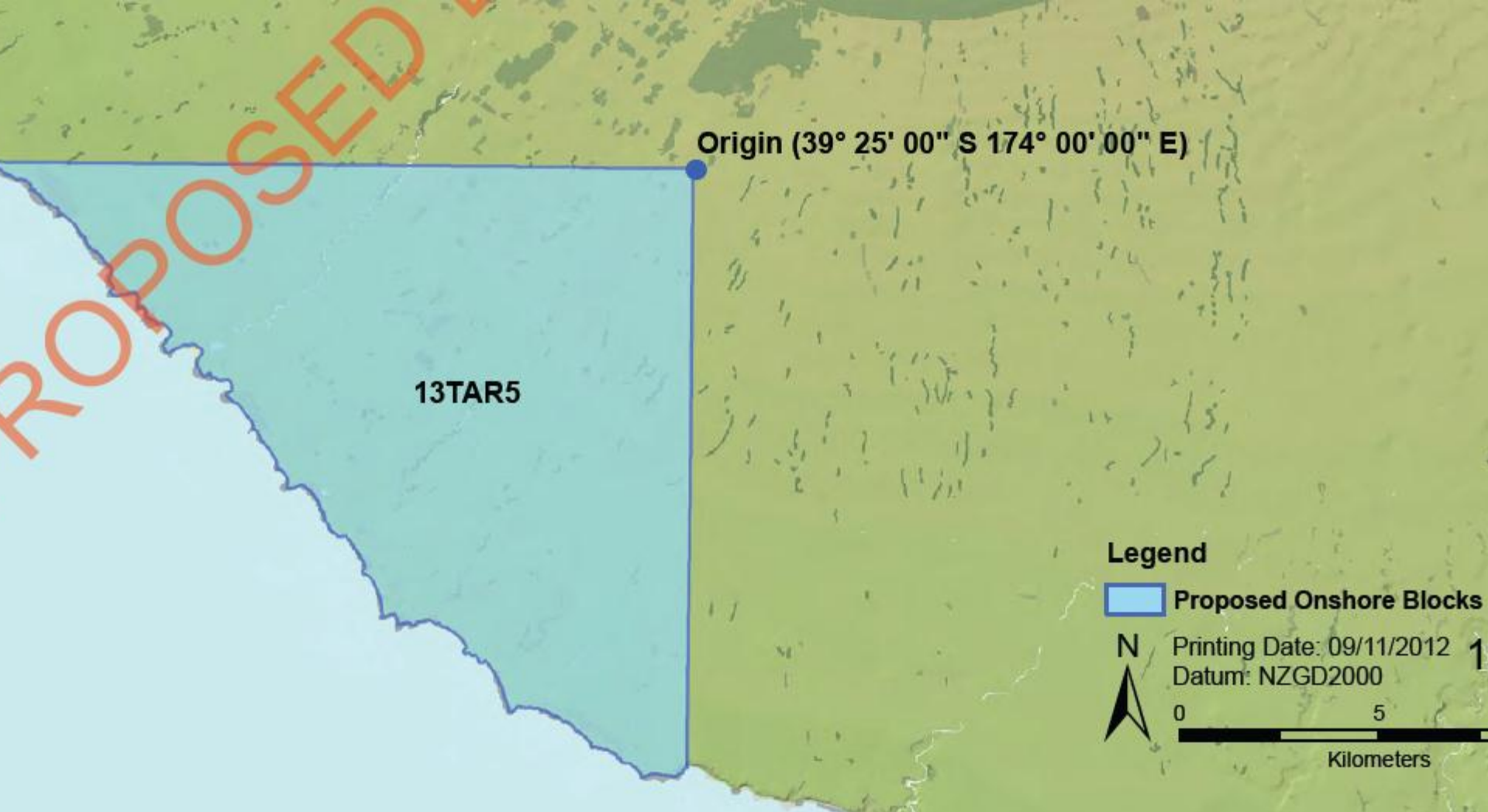
Proposed Block Offer 2013 Onshore Taranaki



- The New Plymouth District is in two parts. The largest area incorporates the eastern portion of Bell Block urban area and extends south almost to Egmont Village.



- The second area is 12 sq kms in area and extends over rural land from Lower Norfolk Road south to Tariki Road South.



- 150 sq kms in South Taranaki includes Oaonui, Opunake and Oeo and inland to Wiremu Road. This includes the township of Opunake and Opunake Beach.

**Use our backyard,
sounds like a fracking
good idea.**

Yeah right.



**Consider the following eight points carefully
when you're approached by oil/gas companies:**



Flare at NZEC's Copper Moki wellsite, Taranaki, June 2012.

Glow from flare at Mangahewa wellsite, photo by M. Smith, 2012.

1. Unacceptable noise, light and traffic from heavy vehicles, machinery and gas flares



2. Your **soil and water** may become contaminated and permanently damaged by toxic chemicals



Lined storage pits at Wellington site, BTW Brown Road landfarm, TRC report 9887702, 2012.



Aerial view of Jonah field (Wyoming, USA) by Bruce Gordon, Ecoflight Sky Truth, 2006.

3. The **health** of your family and livestock may be at risk



Photo (background): Cows near to Cheal A production station, Taranaki, June 2012.

4. Your **groundwater** supply may be adversely affected



Photo (background): Tag Oil rig at Cheal C, Taranaki, June 2012.

5. Your **property value** may fall

Taylor electrical
TARANAKI LTD



Heat pumps
Heating
Ventilation
Specialists

PH 06 751 4943

**HOUSE & LAND
FOR SALE**

3.9499 HA
PH 021 426 866

TAG Oil

**SIDEWINDER
PRODUCTION
STATION**

24 HOUR EMERGENCY
TELEPHONE NUMBER
06 765 7489



Tenix

www.tenix.com

TAG Oil

**Sidewinder
Production Station**

AUTHORISED ENTRY ONLY

6. You may **lose control** of your day to day property management



7. Your community and social wellbeing may change forever



Photo from Abbie Jury, Tikorangi



Photo by Janie Barrett, Sydney



Haana Wilcox, left, with her daughter, Taurito, and mother Lily are a family united in their resistance to approval by oil exploration companies. Photo: John Cowpl

8. You may regret not to have supported the transition to clean, sustainable energy, rather than this:

