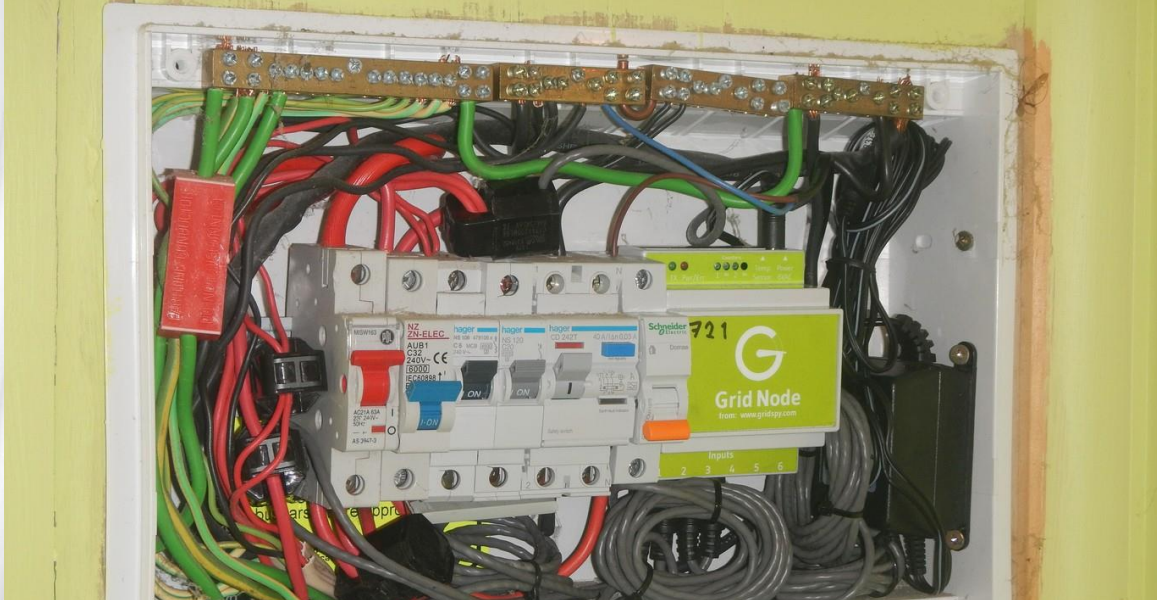
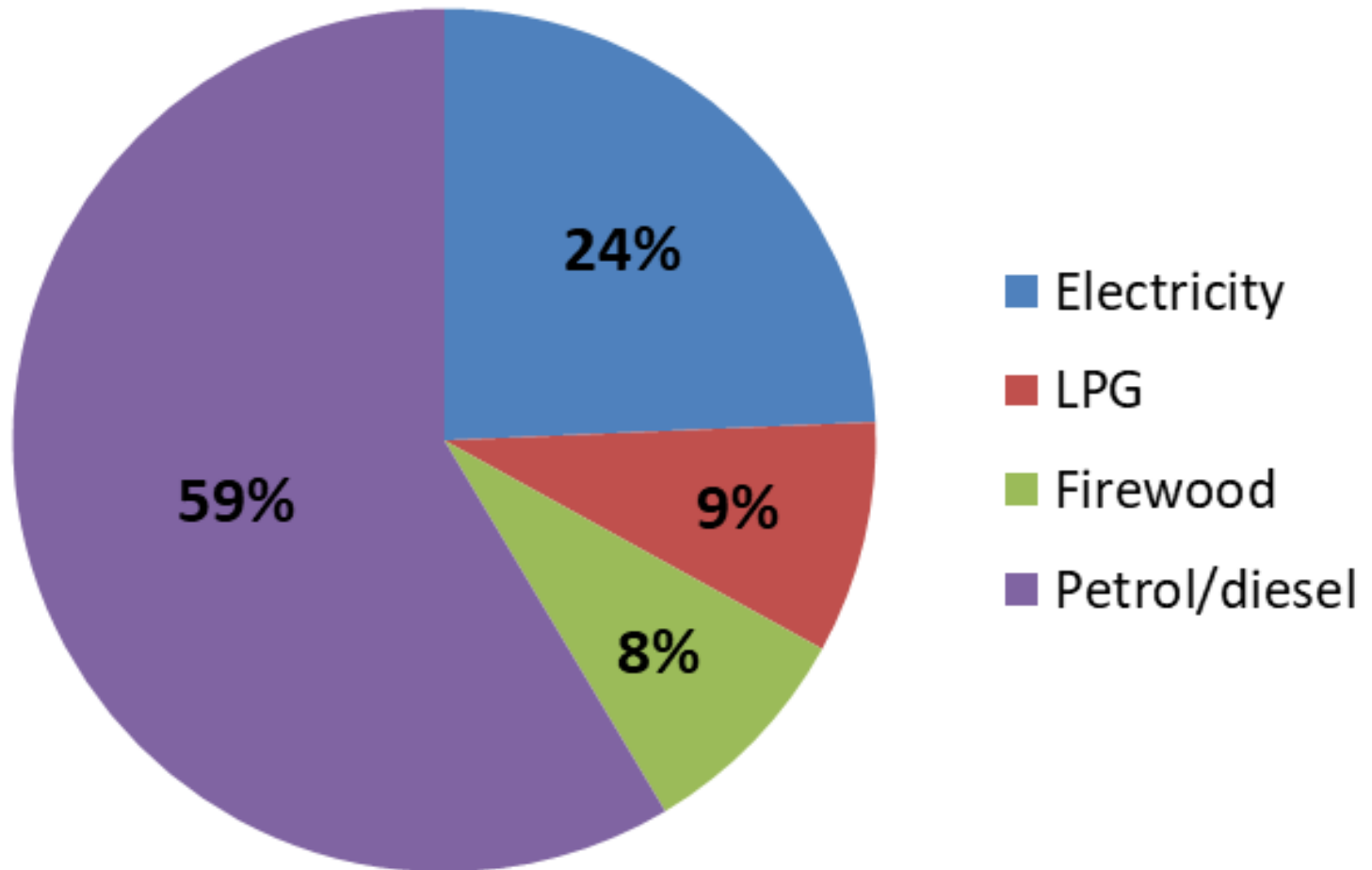


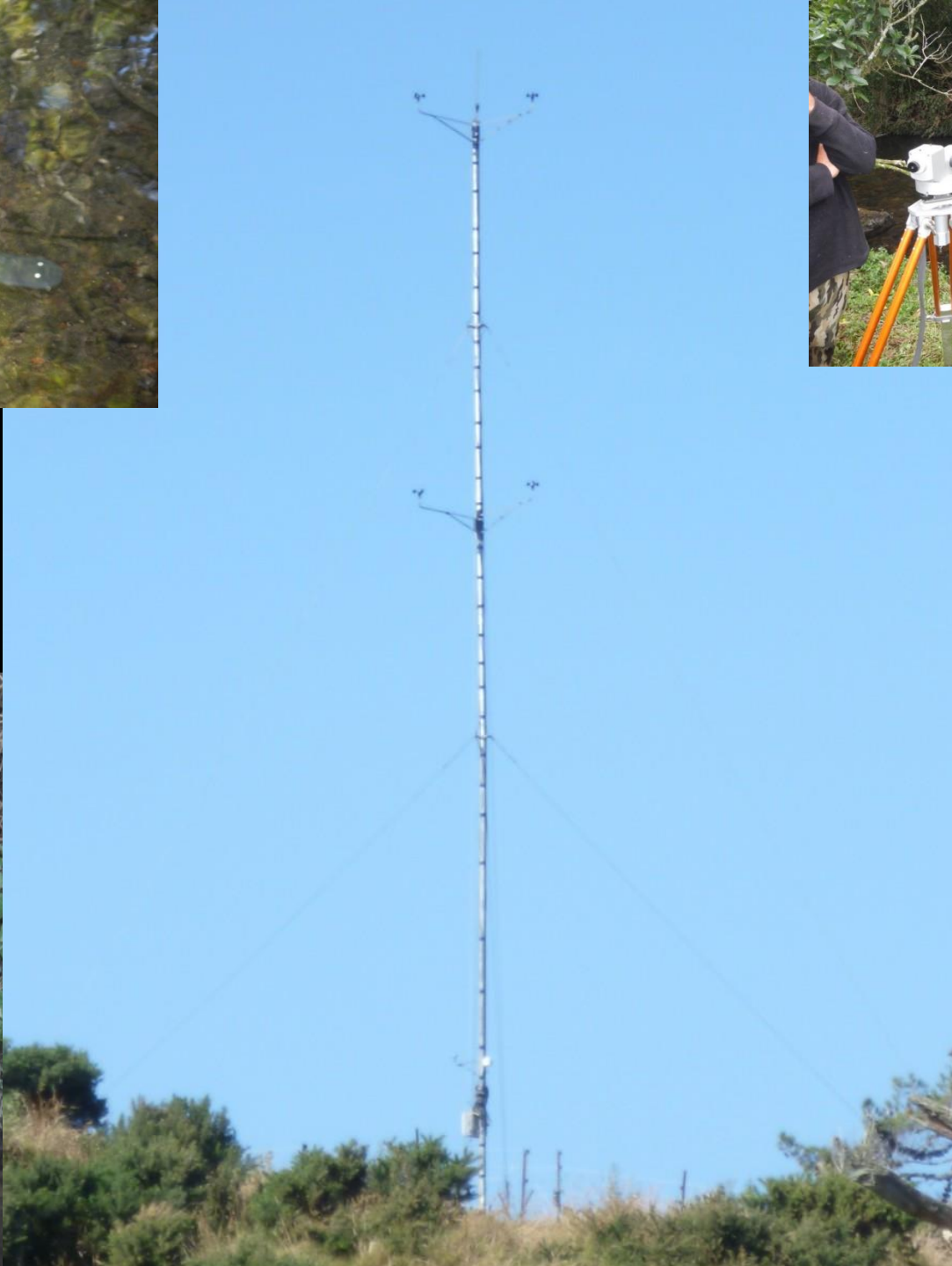
Taiepa Tiketike

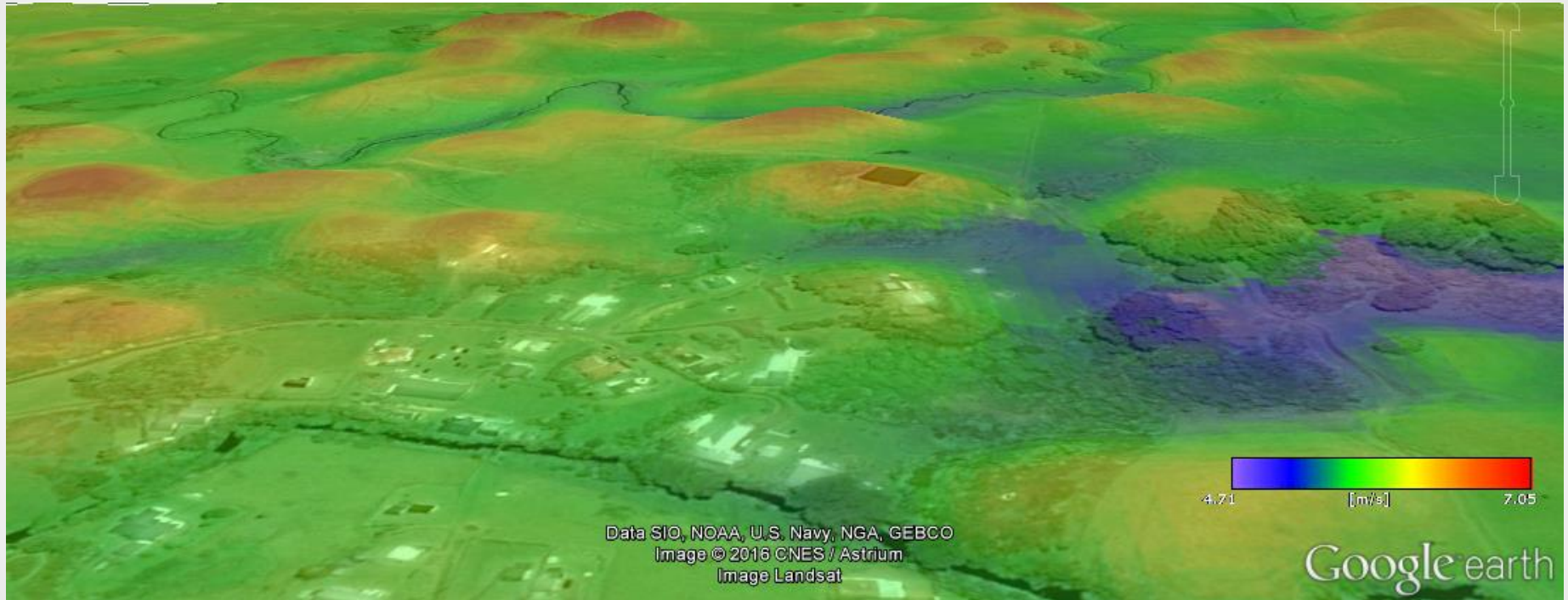
Community energy research at Parihaka
Papakāinga – Tihikura Hohaia & Joshua Curd
with thanks to Parihaka Papakāinga Trust, Ministry of Business,
Innovation & Employment, Massey University



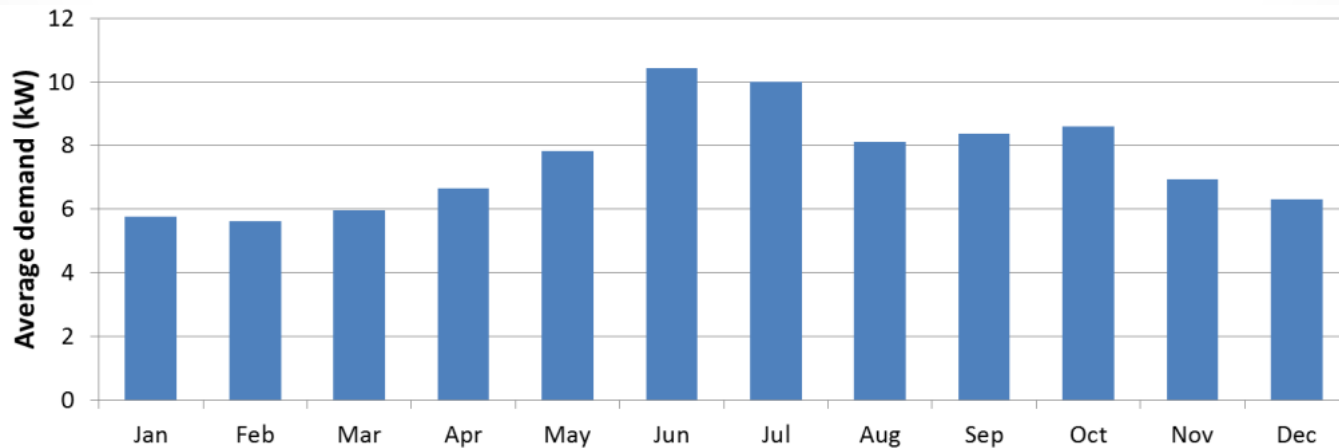
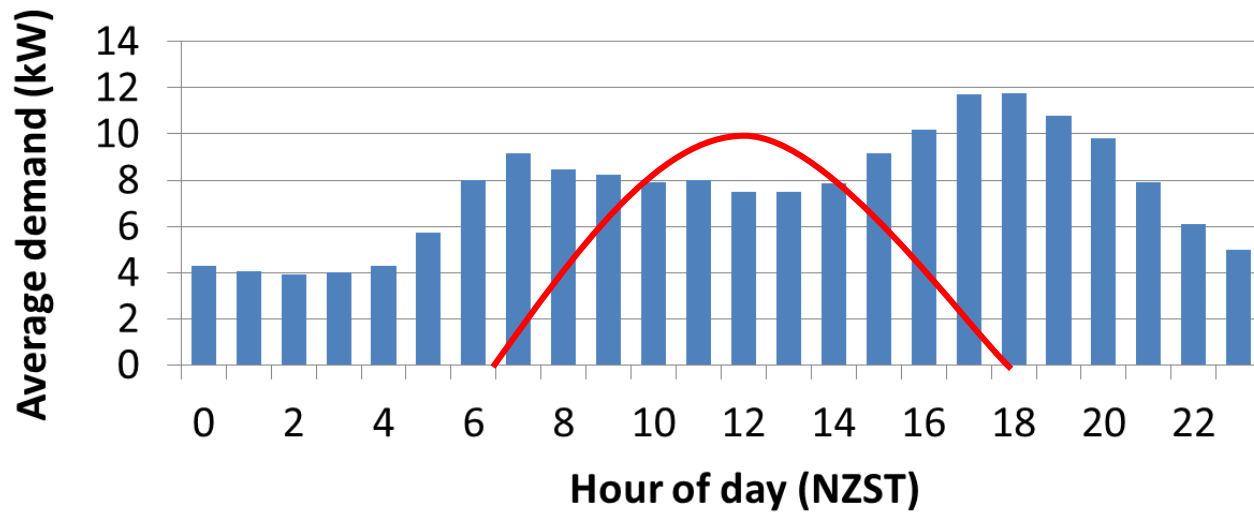
Energy





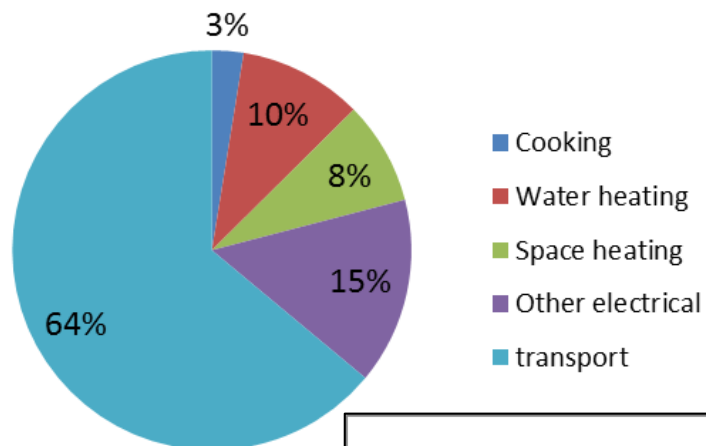


When is electricity needed?

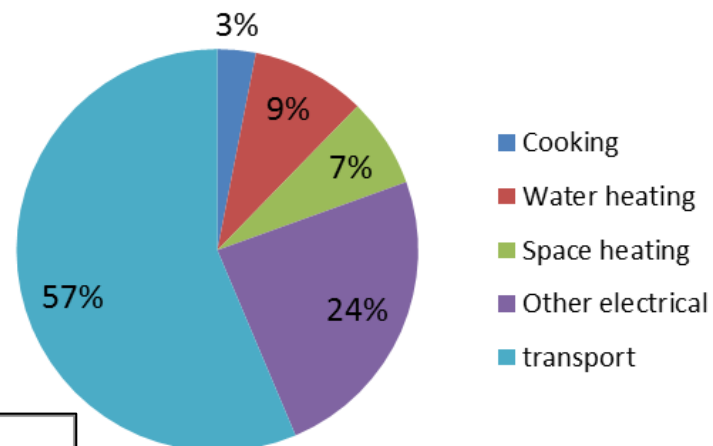


Average household

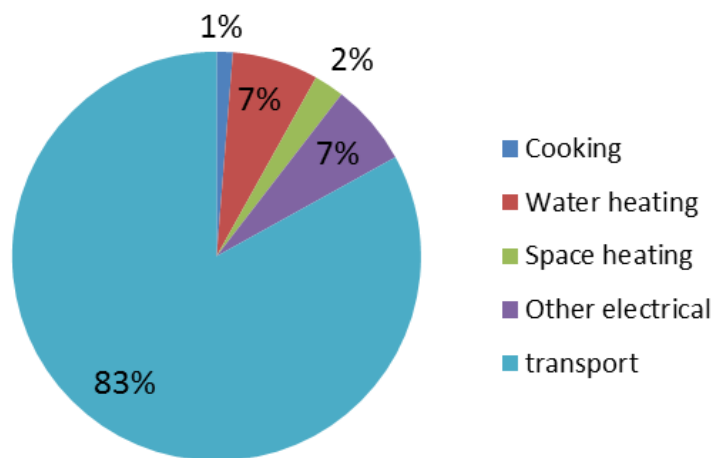
Energy



Cost



Emissions



Reducing energy related community GHG emissions

- Ride sharing – organisation of catching lifts, develop community transport, develop SH45 public transport
- Vehicle efficiency, fuel - Electric vehicles
- Papakāinga new building design – low energy housing (insulation, glazing, thermal mass, passive solar etc)
- Energy efficiency – lighting, appliances, water heating etc

Community energy resilience

- Indigenous (i.e. local) energy resources. But electricity expensive to supply independent of grid.
- Solar water heaters
- Sustainably managed woodlot e.g. short rotation coppicing
 - Woodburners for space heating and water heating in homes
 - Wood-fired boilers for Marae
- Hangi
- Bicycle, cargo bike (for communities closer to town)

Kia ora, thank you!